



Installation Instructions

Complete set active Sound incl. Soundbooster

VW Touareg 7L
v1.3 (07.12.2017)

Contents

1	Liability Exclusion	3
2	Copy Right	4
3	General Notes	4
4	Safety instructions	5
5	Requirements for the determinable operation	5
6	Note	5
7	How to connect a cable to another	6
8	Note Cable Inscription/Color	7
9	Assembly Instructions	8
10	Removing trim panel dashboard	9
11	Removing sill trim and light switch	10
12	Removing lower trim of the instrument panel	11
13	Removal tachometer	12
14	Connection CAN-Bus and ignition lead	13
15	Connection ground and removing trim panels passenger's side	14
16	Removal cover parts passenger's side	15
17	Removal passenger's seat	16
18	Removal seat console passenger's side	17
19	Routing connecting cable sound generator	18
20	Installation sound generator / pushbutton	19
21	Software	20
22	Software	21
23	Software	22
24	Important Information Sound Booster	23

1 Liability Exclusion

Dear Customer

Our cable sets are developed according to the connection- and circuit diagrams of the corresponding car manufacturer. Before the original production the cable sets will be tested on an original car. Therefore, the integration into the car electronics will be executed according to the instructions of the manufacturer. Regarding the necessary pre-understanding and the accuracy of the presentation of texts and pictures our mounting guidelines correspond to the usual ones in car technology and car electronics. Practically, they have been proved one's worth a hundred times.

However, should there be any difficulties during the installation of our products we will be at your disposal any time for support by phone or by mail. Moreover, we offer you to execute the installation at our works in Bad Segeberg.

Costs which may arise because a third person will execute the installation of our products will not be supported by us in any case. Only if there is a mistake caused by our product we will pay the proved costs of the installation as well as the costs of the removal of the defective product. The refund of expenses will be limited to gross EUR 110,- ; we reserve the right to check the described mistake in our works in Bad Segeberg. In case of a proved reclamation the costs for dispatch for the check in our factory will be transferred to you.

According to our experience each specific factory which has the necessary diagnostic device, diagnostic software and the circuit diagrams of the manufacturer can find possible mistakes at our products within a short time. So the installation and removal including diagnostic inspection can be realised in at most 60 minutes.

We also made the experience that many specific factories cannot work with the circuit diagrams of the manufacturer, and that they cannot read usual wiring diagrams. Therefore, very easy installation works will take many hours. You will understand that we neither take the risk to find a reliable specific factory nor the financing of the training of the staff of your favoured factory.

Costs which will arise because you buy missing parts or spare parts at other suppliers will be refunded by us up to the amount of the costs which had been arisen by additional supply (saved expenses). In this case, there would be no right for refund according to the legal guarantee right as long as we have no deadline for supplementary performance or a deadline for supplementary performance has not expired.

So if you have any problems with the installation or operation of one of our products please call us, send us an email, send us the product or take your car to our factory in Bad Segeberg. We are sure to find an appropriate solution for each concern.

With best regards

Your Kufatec GmbH & Co. KG Team

2 Copy Right

Our installation- and removal instructions, installation plans, software and other documentation with texts or pictures are protected by copy right.

A publication or distribution of these documents is only permitted with a written approval of Kufatec GmbH & Co. KG.

3 General Notes

Regarding the development there has especially been paid attention to your personal safety together with the most possible operating comfort, modern design and actual product technologies.

Despite most possible accuracy in case of incorrect installation or use or in case of incorrect operating, it is possible that injuries or damages of property may arise.

Therefore, please read the operating instructions you have received carefully and completely, and keep it with you.

All articles of our production will be checked at 100% — for your safety.

We reserve the right to make technical changes which serve the progress at any time.

Before the installation or startup it may be necessary, depending on the article and purpose of use, to check the legal instructions of each country.

In case of warranty claim the device has to be sent to the seller originally packed together with the sales receipt and a detailed description of the mistake. Please consider the manufacturer's instructions for return (RMA). The legal warranty instructions are valid.

The warranty claim and also the permission for startup will expire in case of:

- unauthorised changes on the device or the accessories which have not been executed or approved by the manufacturer or its partners
- opening of the box
- repair of the device on your own
- incorrect use / no normal use / startup
- influence of force on the device (falling down, wilful damage, accident, etc.)

During the installation please consider all safety and legal instructions. The device may only be installed by trained qualified personnel or persons who are similar qualified.

In case of installation- or function problems please reduce the search of the mistake to approx. 0,5 hours for mechanical works or 1,0 hours for electronic works.

To avoid unnecessary additional work and expenses, please send immediately an inquiry to our technical support with the Kufatec contact form (<http://www.kufatec.de/shop/de/infocenter/>)

Please absolutely mention the following:

- car chassis number
- part number of the add-on kit
- exact description of the problem
- work steps already made

4 Safety instructions

The installation may only be executed by trained qualified personnel. Please execute the installations only in a condition of dead voltage. Here please separate for example the battery from the main power supply and consider the instructions of the car manufacturer.

- In order to not endanger your own driving safety please never use security relevant screws, bolts or other fixation pieces at steering, brake system or other components.
- Connect the device only at 12V wiring system voltage with ground connection to the autobody. This assembly is not allowed for the use in trucks or other cars with 24V wiring system voltage.
- Please avoid the installation of the device at positions where the driving safety or the functional efficiency of other subassembly integrated in the car are restricted.
- This module may only be used together with the following mentioned car types and models; the installation may be executed exclusively by use of the circuit points mentioned in the assembly instructions.
- Kufatec GmbH & Co. KG does not assume liability for damages which are caused by incorrect installation, the use of inapplicable circuit points or the installation into car types and -modules which are not foreseen.
- We would like to draw your attention to the fact that the module processes the data of the MOST-protocol of the car mentioned below. Therefore, during the installation of the module it will be used a model-specific complete system which we as the manufacturer of the mentioned construction line only know partly.
- Especially in case of changes within the same model line and the same year we therefore cannot guarantee the applicability of our construction line in each case. Kufatec GmbH & Co. KG does not assume liability for the applicability of our construction line with changes made by the manufacturer.
- Kufatec GmbH & Co. KG does not assume liability that the installation of the here described component has been permitted according to the guarantee instructions of particular car manufacturers. Therefore, please consider the guidelines for installation and guarantee conditions of your car manufacturer before installation.
- The manufacturer reserves the right to change components without giving reasons.
- Subject to errors and changes

5 Requirements for the determinable operation

Please use the device only in its the corresponding area.

In case of unprofessional and untypical use, installation or modification the permission for operation and the warranty claim will expire.

6 Note

Make sure that there's enough space at the described position. If there is no space please cancel the installation and contact our technical support.

The use of a sound booster is not permitted without registration in the vehicle papers, in the area of the german StVZO. The noise emission of the vehicle is increased by this retrofit. The regulations of the StVZO must be observed. It is therefore recommended to ask for a specific registration option at the responsible TÜV/DEKRA office before retrofitting. Outside Germany, please observe the laws on vehicle licensing applicable in your country.

7 How to connect a cable to another

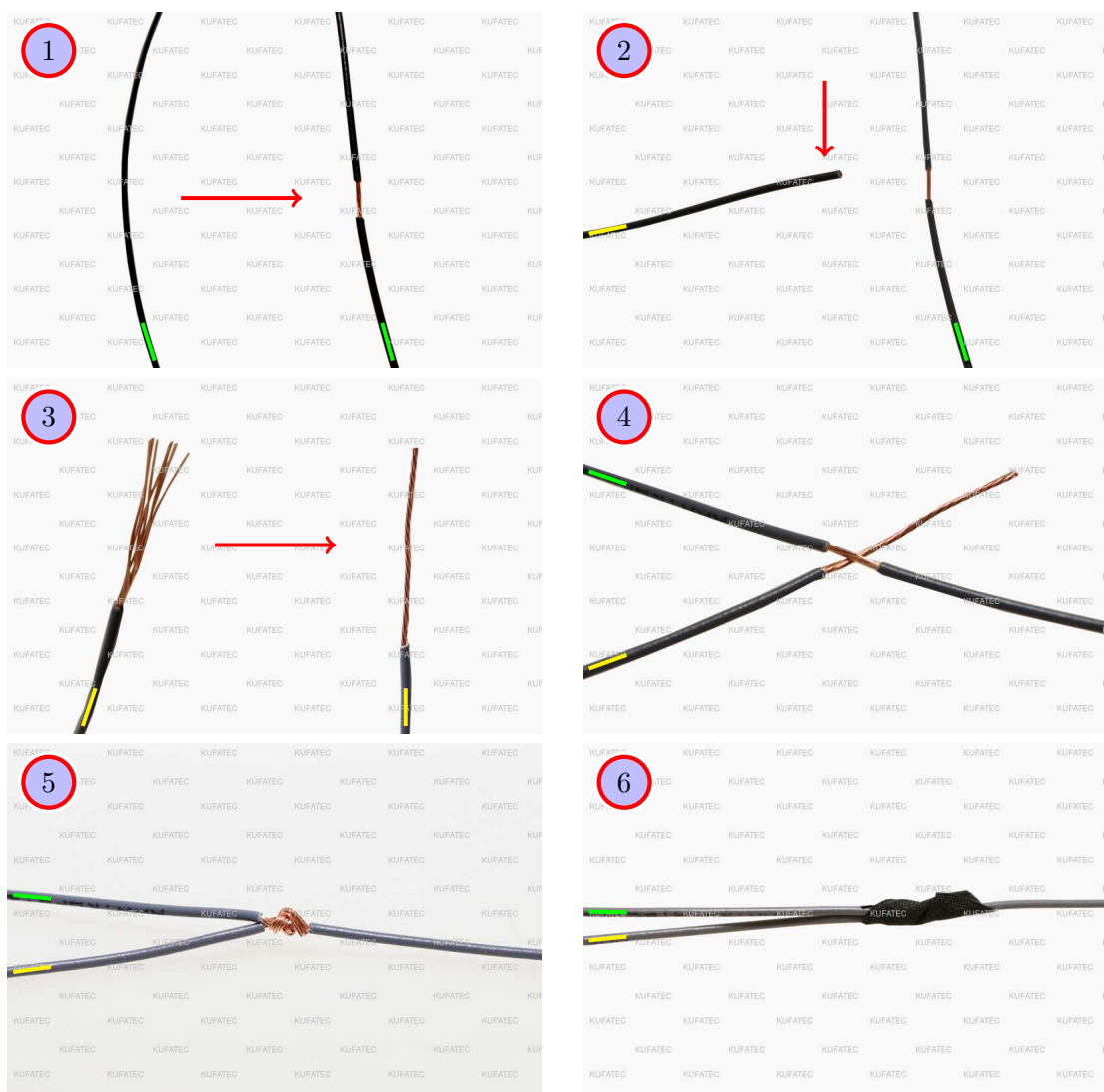


Figure 1: How to connect a cable to another

Table 1: How to connect a cable to another

No.	Work step	Note
1	Take the cable of the vehicle, to which you want to connect, (green marked here) and strip the insulation at one point with a suitable tool (cable stripper/cutter knife).	
2	Now take the cable of the cable set, which you want to connect, (yellow marked here) and strip the insulation at the end.	
3	Twirl the wires of the stripped cable together.	
4	Place the end of the cable you want to connect under the stripped point of the cable of the vehicle...	
5	... and wrap the cable you want to connect around the cable of the vehicle.	
6	Lastly, stick insulating tape around the connection point.	

8 Note Cable Inscription/Color



Figure 2: Cable Inscription

If our cable set consists exclusively of grey wires, connect the wires according to the cable inscription.

9 Assembly Instructions

The following illustration shows the cable routing as well as the position of the individual components.

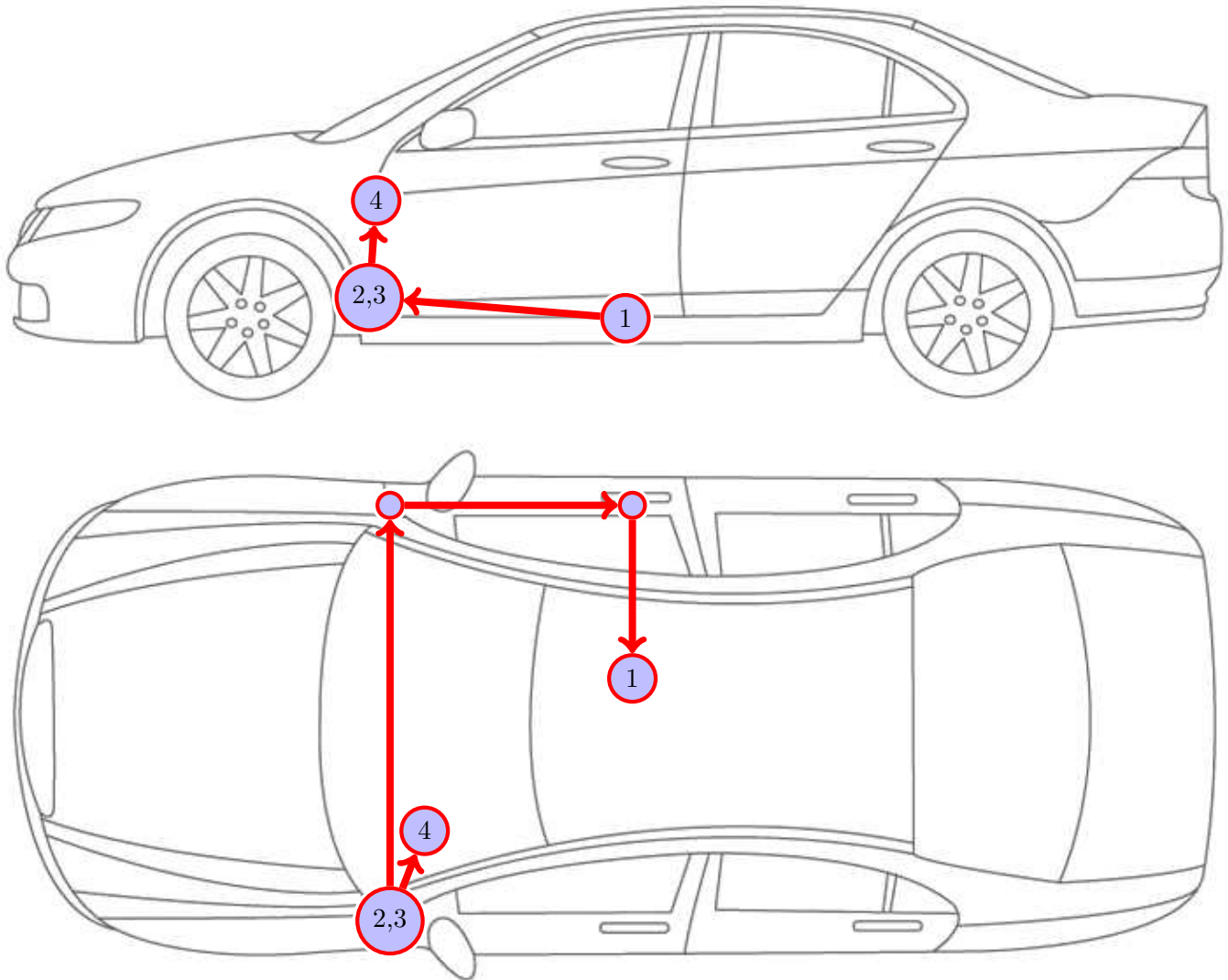


Figure 3: Vehicle overview

- 1 External sound generator incl. mounting plate
- 2 Control unit for engine sound generation
- 3 Sound Booster Pro (module)
- 4 Pushbutton

10 Removing trim panel dashboard

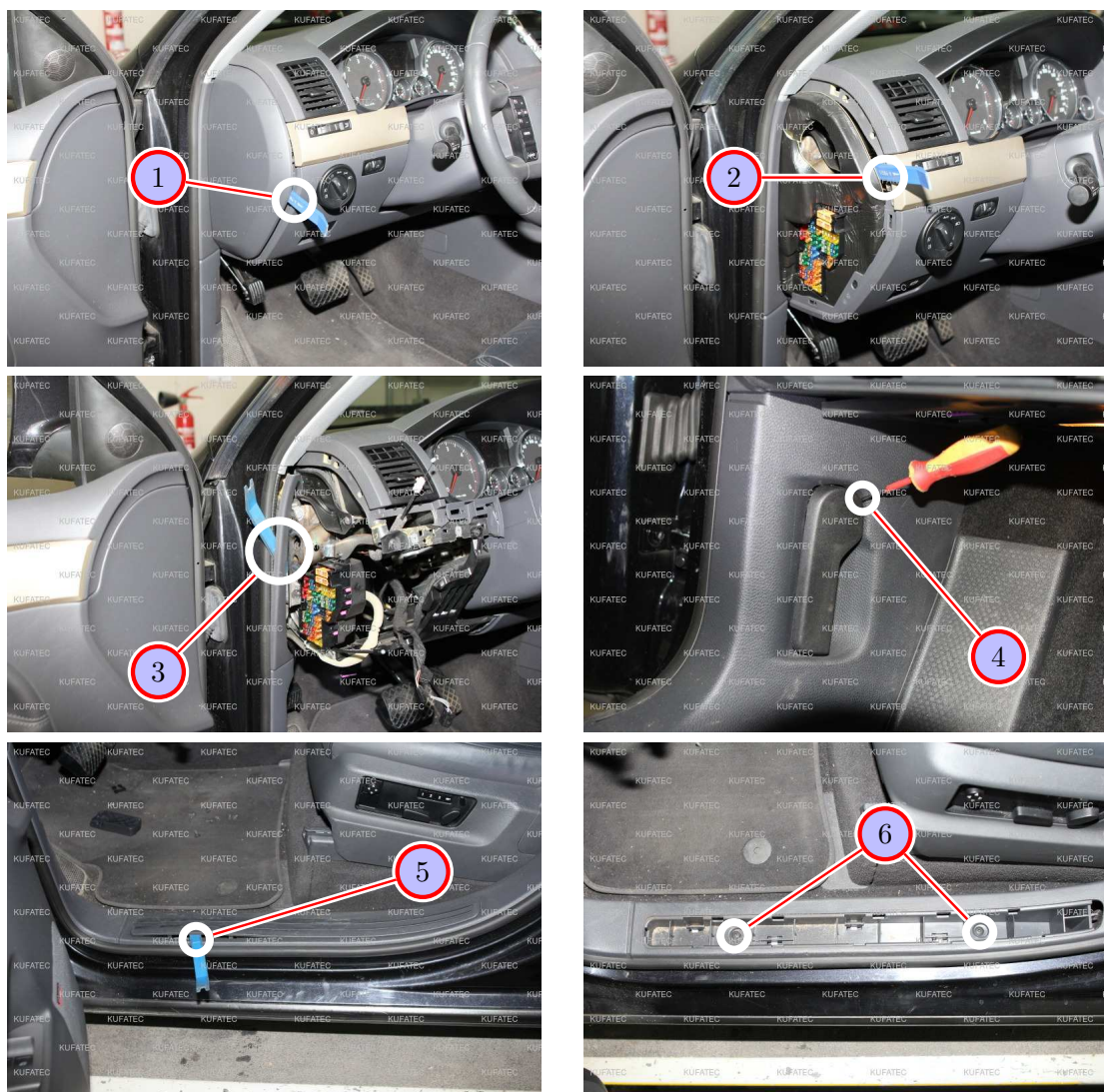


Figure 4: Removing trim panel dashboard

Table 2: Removing trim panel dashboard - instructions

Nr.	Work step	Note
1	Remove the lateral covering of the dashboard with a trim tool.	
2	Take the foam out that is located behind.	
3	Remove the upper trim panel of the a-pillar with a trim tool.	
4	Pull the hood release and, with a flat-blade screwdriver, remove the interlock clip which is located on the back of the lever. Afterwards the lever can be removed.	
5	With a trim tool, lever the upper sill trim covering out.	
6	Now loosen the 2 marked screws.	T20

11 Removing sill trim and light switch

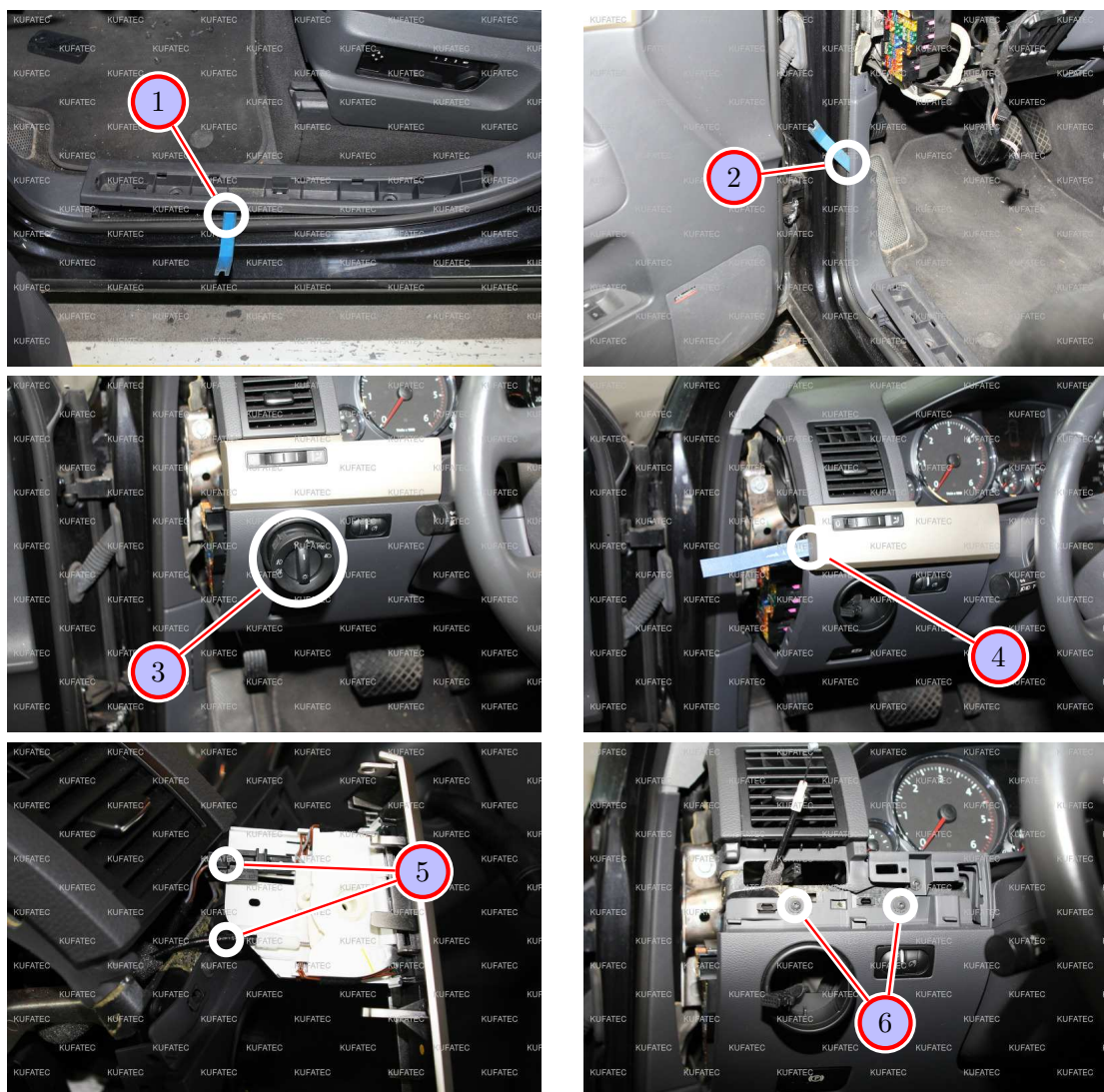


Figure 5: Removing sill trim and light switch

Table 3: Removing sill trim and light switch - instructions

Nr.	Work step	Note
1	Lever the sill trim of the driver's side up in the front area with a trim tool.	
2	Remove the lower trim panel of the a-pillar on the driver's side.	
3	Remove the light switch by turning it to 0, then pressing it in and turning it one position to the right afterwards. Now it can be pulled out forward.	
4	Remove the marked trim strip with a trim tool.	
5	Remove the Bowden cable and the plug of the air discharge installation.	
6	Now loosen the 2 marked screws.	T20

12 Removing lower trim of the instrument panel

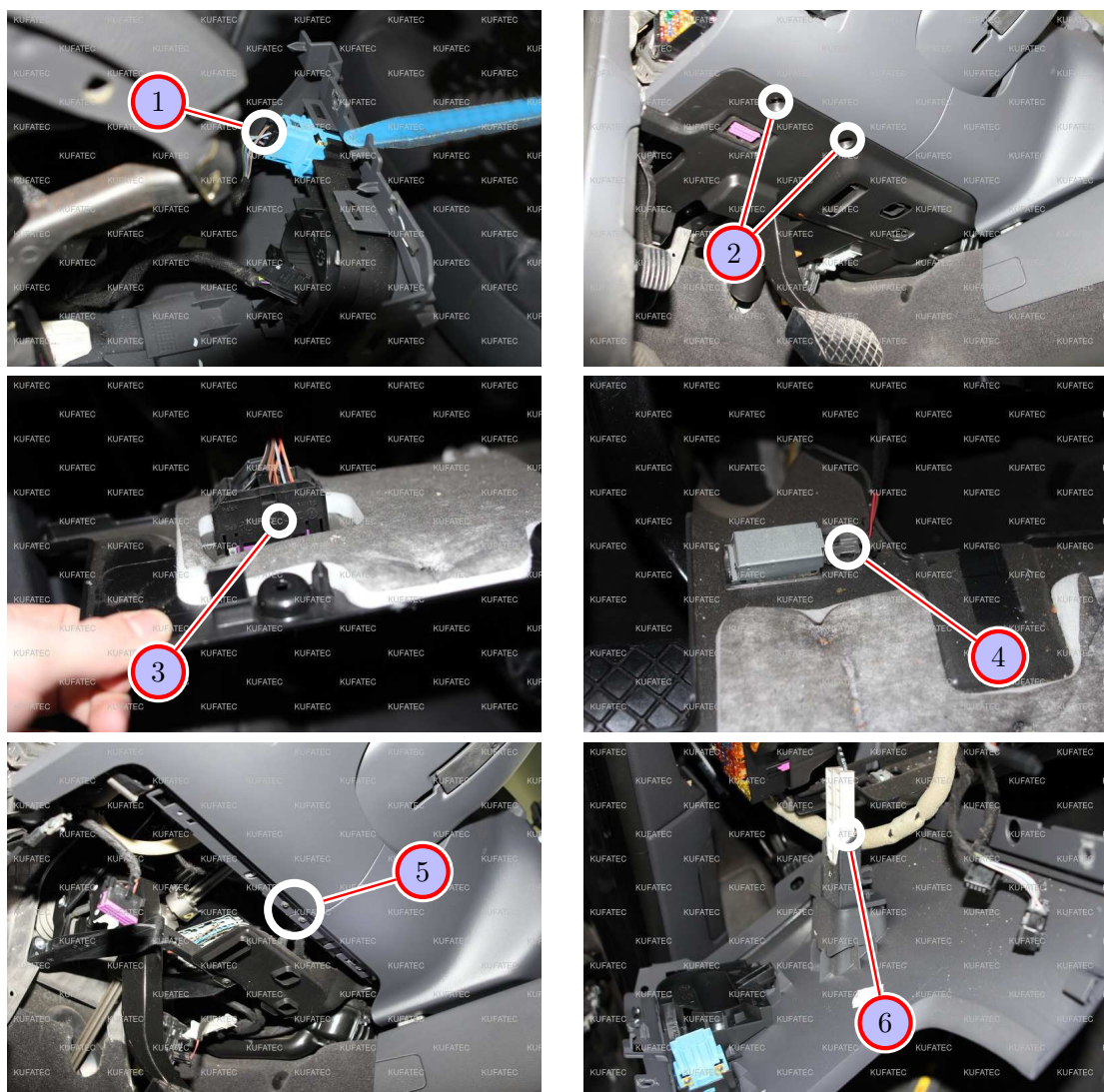


Figure 6: Removing lower trim of the instrument panel

Table 4: Removing lower trim of the instrument panel - instructions

Nr.	Work step	Note
1	Fold the left trim of the instrument panel forward and move the plug of the dimmer switch off.	
2	Loosen the 2 marked screws and pull the trim panel down.	T20
3	Remove the OBD power outlet.	
4	Move the plug of the footwell lighting off.	
5	Now loosen the 2 marked screws of the lower trim panel and pull the left trim panel of the dashboard forward carefully.	T20
6	Remove the Bowden cable of the lever which unlocks the hand brake.	

13 Removal tachometer

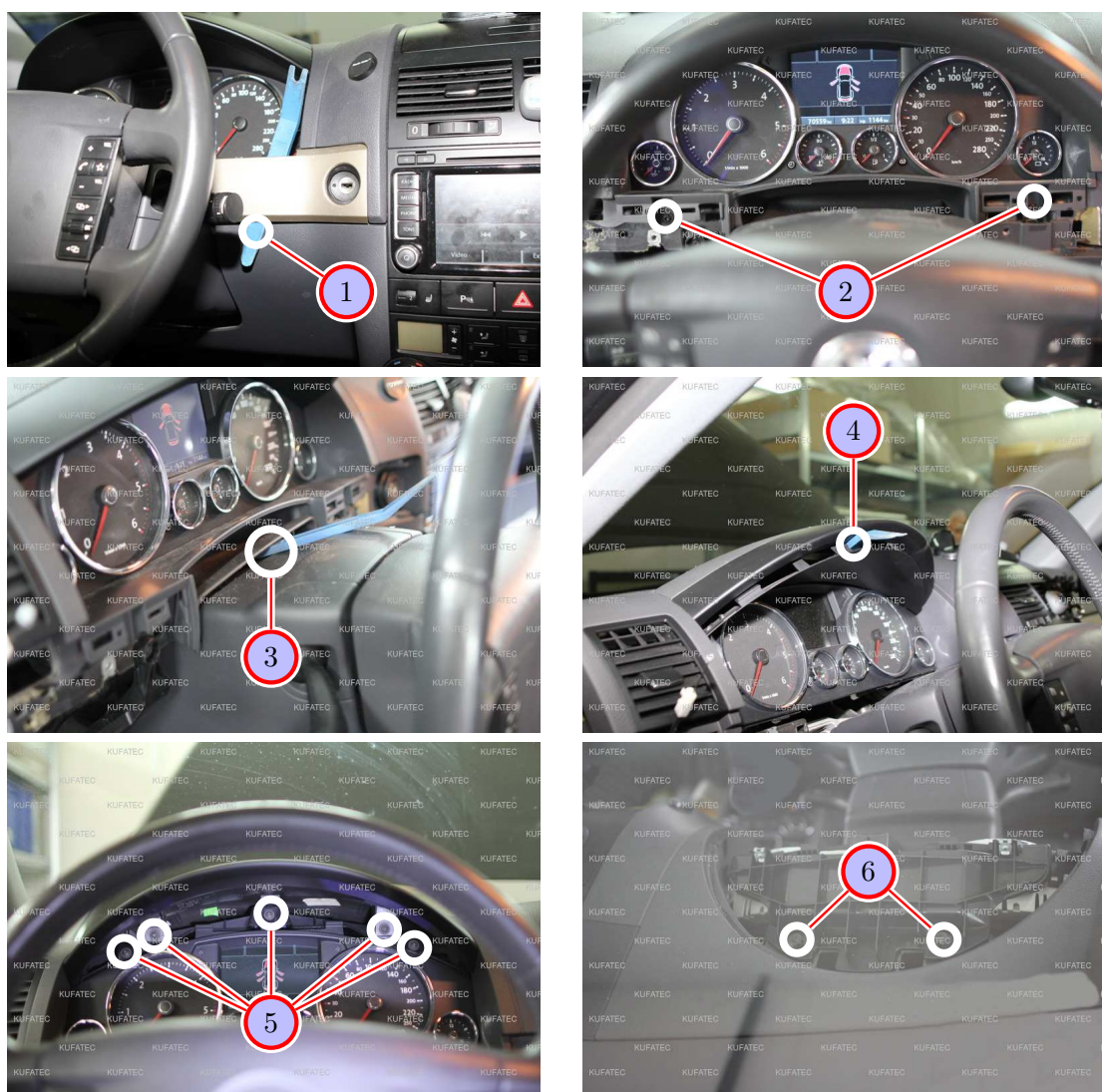


Figure 7: Removal tachometer

Table 5: Removal tachometer - instructions

Nr.	Work step	Note
1	Remove the marked trim strip using a trim tool.	
2	Loosen the 2 marked screws.	T20
3	Remove the upper covering of the steering column with a trim tool.	
4	Lever the inner cover over the tachometer out.	
5	Now loosen the 5 marked screws and take the upper covering of the tachometer out afterwards.	T20
6	Loosen the two marked screws at the top of the tachometer bracket and pull the tachometer up out afterwards.	T20

14 Connection CAN-Bus and ignition lead

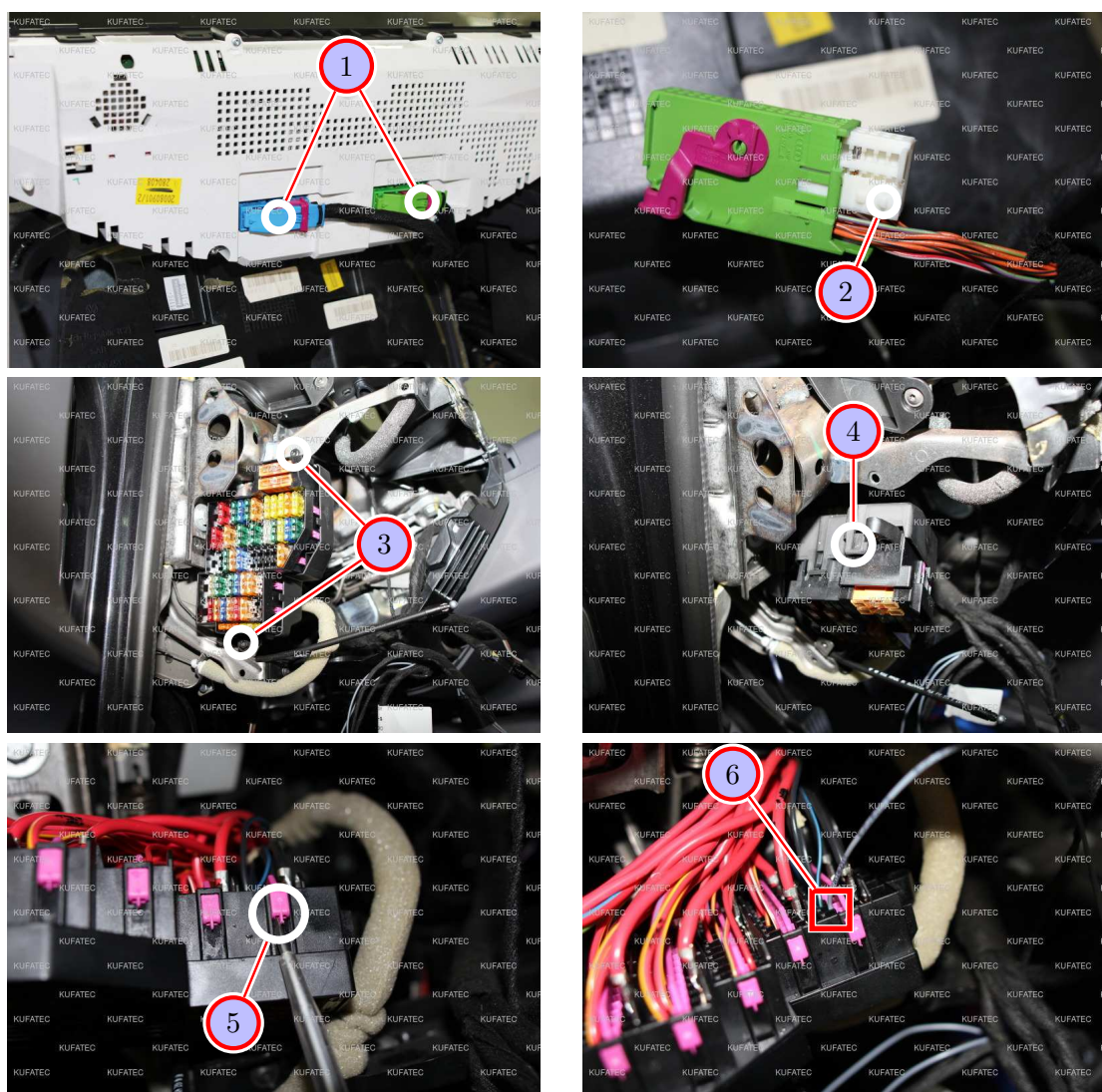


Figure 8: Connection CAN-Bus and ignition lead

Table 6: Connection CAN-Bus and ignition lead - instructions

Nr.	Work step	Note
1	Move the marked plugs from the tachometer off.	
2	Remove the green plug cap. Afterwards connect the cables for the CAN-Bus to the white plug unit as follows: - CAN-High (black/white) to the orange/black cable of pin 19 - CAN-Low (black/yellow) to the orange/brown cable of pin 20 For Cars up to production year April 2003 the connection need to be done as follows: - CAN-High (black/white) to the orange/violet cable of pin 19 - CAN-Low (black/yellow) to the orange/brown cable of pin 20	
3	Loosen the 2 marked screws of the fuse carrier.	T20
4	Remove the back covering cap from the fuse carrier.	
5	Pull the marked interlock forward.	
6	Now place the cable for ignition lead (red/white) in the marked fuse spot 46. If this spot is occupied, measure with a multimeter, which free fuse spot carries ignition lead (terminal 15) and place the cable there.	

15 Connection ground and removing trim panels passenger's side

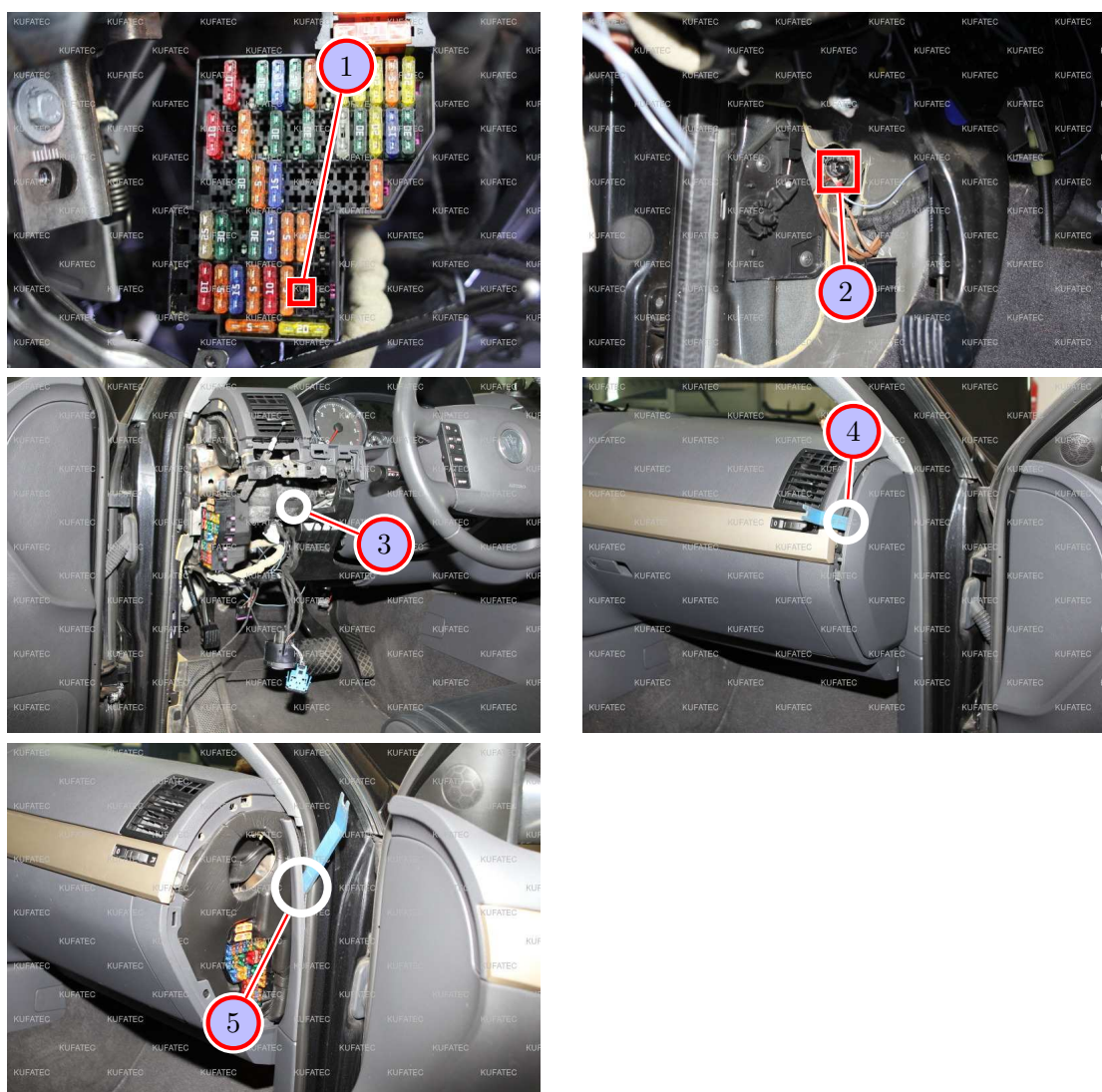


Figure 9: Connection ground and removing trim panels passenger's side

Table 7: Connection ground and removing trim panels passenger's side - instructions

Nr.	Work step	Note
1	Protect the spot with 7,5 A.	
2	Attach the ground cable (brown) to the marked ground spot at the a-pillar of the driver's side.	10er socket
3	Connect the cable set to the delivered control units and place them at the marked position.	
4	Remove the right trim of the instrument panel with a trim tool.	
5	Lever the upper trim panel of the a-pillar off with a trim tool.	

16 Removal cover parts passenger's side

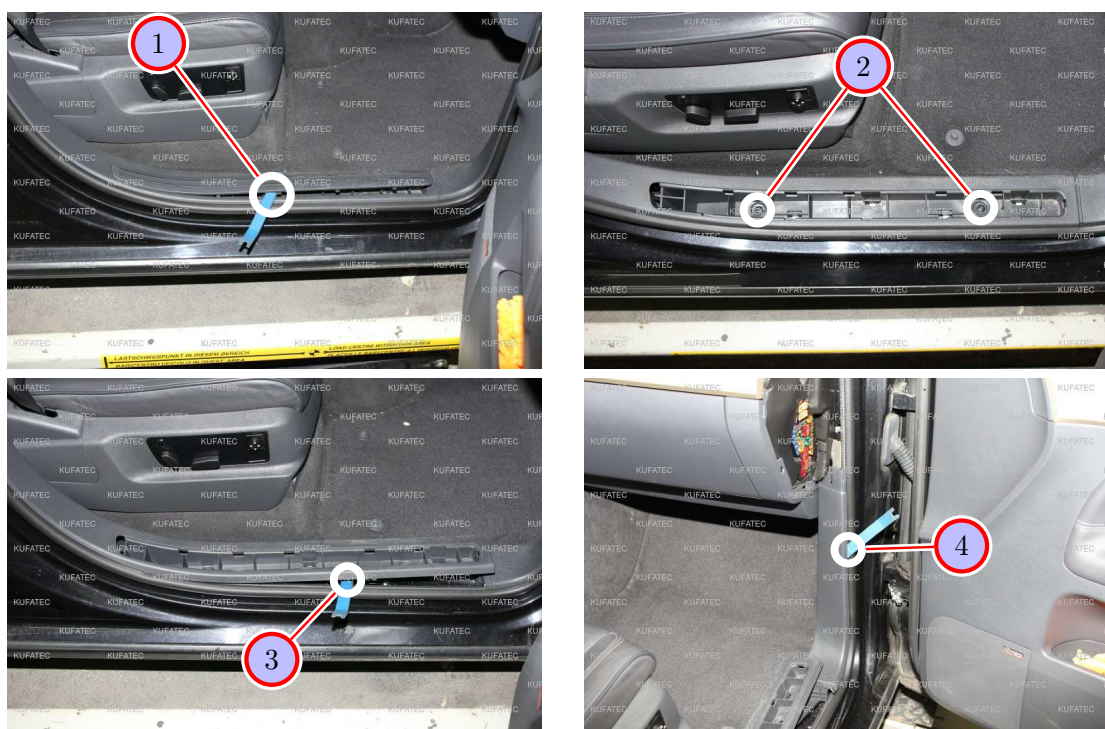


Figure 10: Removal cover parts passenger's side

Table 8: Removal cover parts passenger's side - instructions

Nr.	Work step	Note
1	Loosen and remove the covering of the sill trim using a trim tool.	
2	Remove the two marked screws of the sill trim on the passenger's side.	T20
3	Loosen the sill trim using a trim tool.	
4	Afterwards remove the trim panel of the a-pillar with a trim tool.	

17 Removal passenger's seat

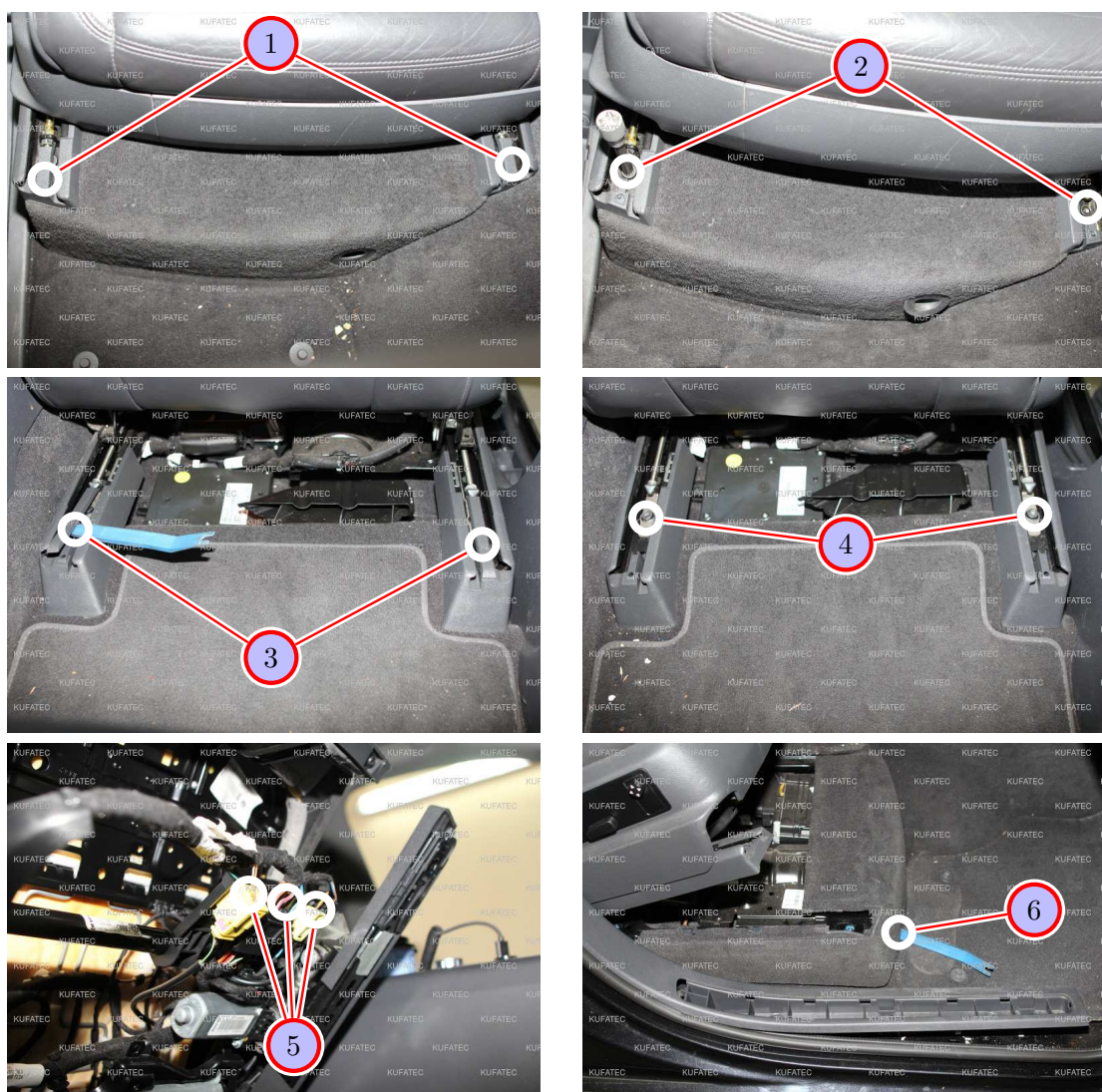


Figure 11: Removal passenger's seat

Table 9: Removal passenger's seat - instructions

Nr.	Work step	Note
1	Loosen and remove the coverings from the guide rails of the seat in the front using a trim tool.	
2	Now loosen the marked screws of the seat in the front and move the seat forward as far as possible afterwards.	VZ10
3	Remove the coverings from the guide rails behind using a trim tool.	
4	Loosen the screws of the seat behind and topple the seat backwards carefully.	
5	Remove the marked plugs at the bottom of the seat and fold it back as far as possible.	
6	Loosen and remove the marked covering using a trim tool.	

18 Removal seat console passenger's side

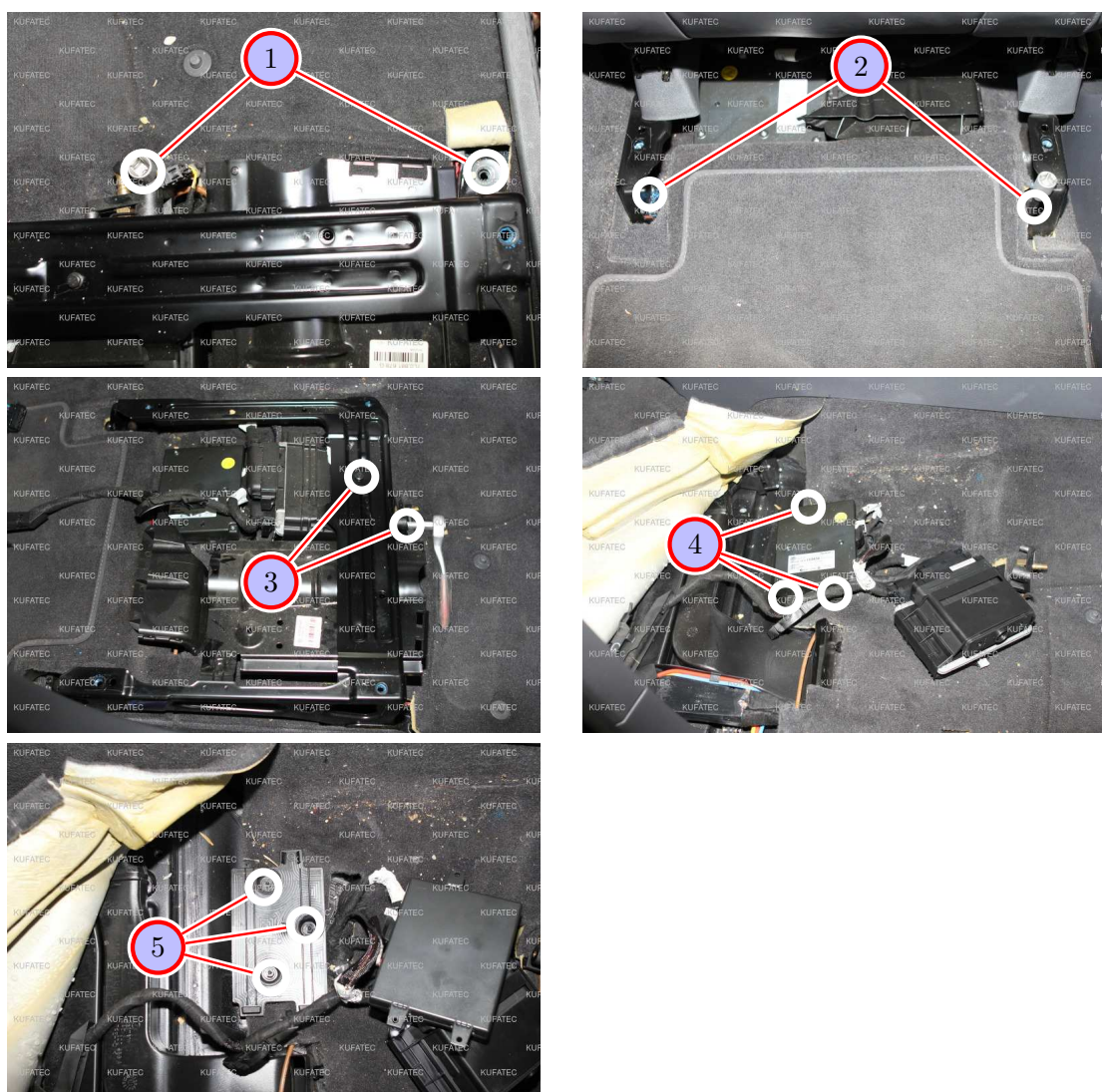


Figure 12: Removal seat console passenger's side

Table 10: Removal seat console passenger's side - instructions

Nr.	Work step	Note
1	Loosen the marked screws in the front at the seat console.	VZ10
2	Afterwards loosen the marked screws back at the seat console of the passenger's seat.	VZ10
3	Now loosen and remove the marked screws for the control unit and the ventilation connection.	10er socket
4	Loosen the screws of the telephone control unit.	T20
5	Remove the marked plastic nuts from the bracket of the telephone control unit and take it out afterwards.	10er socket

19 Routing connecting cable sound generator

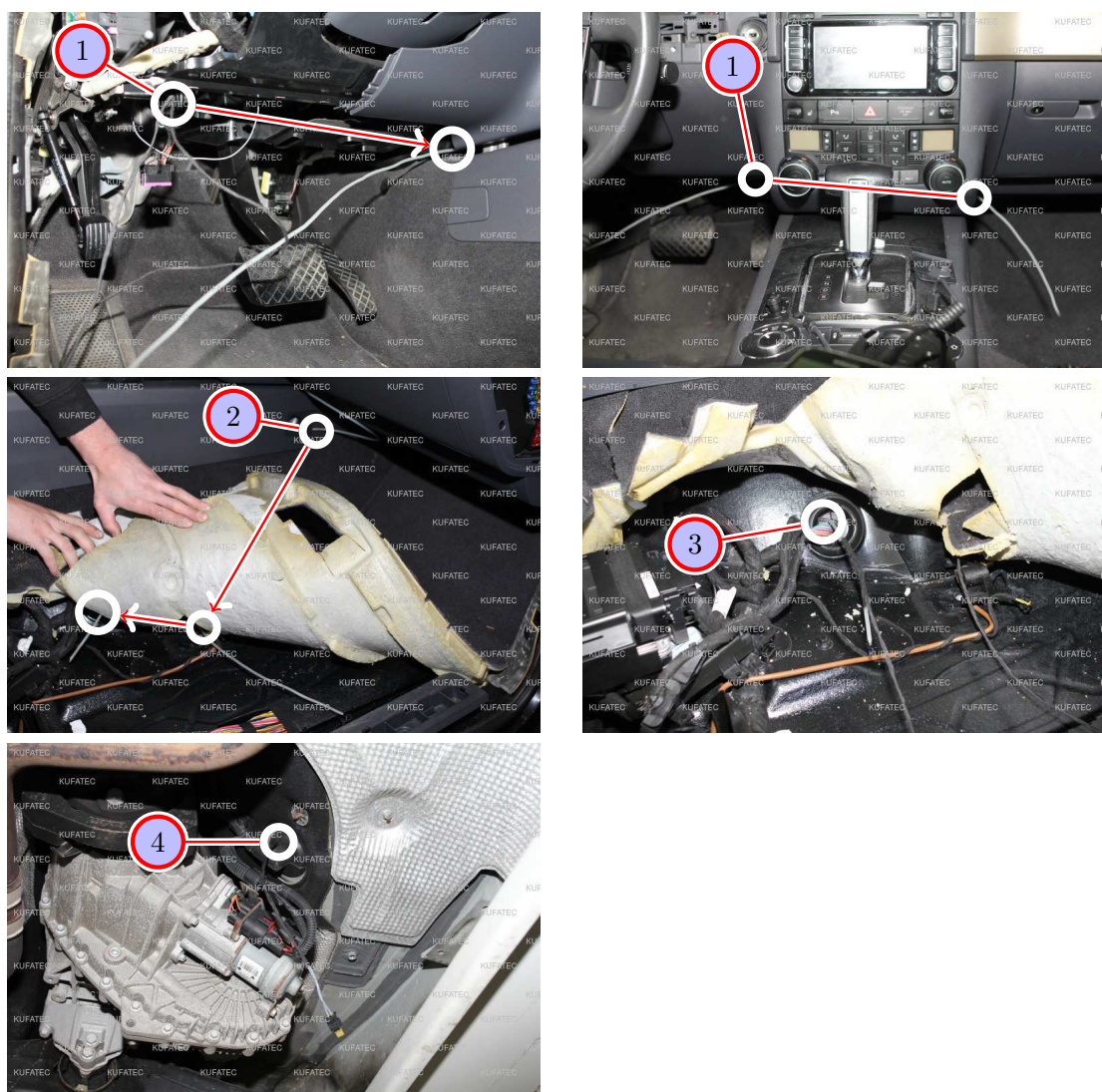


Figure 13: Routing connecting cable sound generator

Table 11: Routing connecting cable sound generator - instructions

Nr.	Work step	Note
1	Route the connecting cable for the sound generator under the dashboard and behind the center console to the passenger's footwell using a pull through aid.	
2	Now pull the connecting cable below the carpet to the marked grommet using a pull through aid.	
3	Guide the connecting cable through the grommet to the underbody.	
4	Pull the connecting cable further through and waterproof the grommet afterwards with suitable workshop material.	

20 Installation sound generator / pushbutton

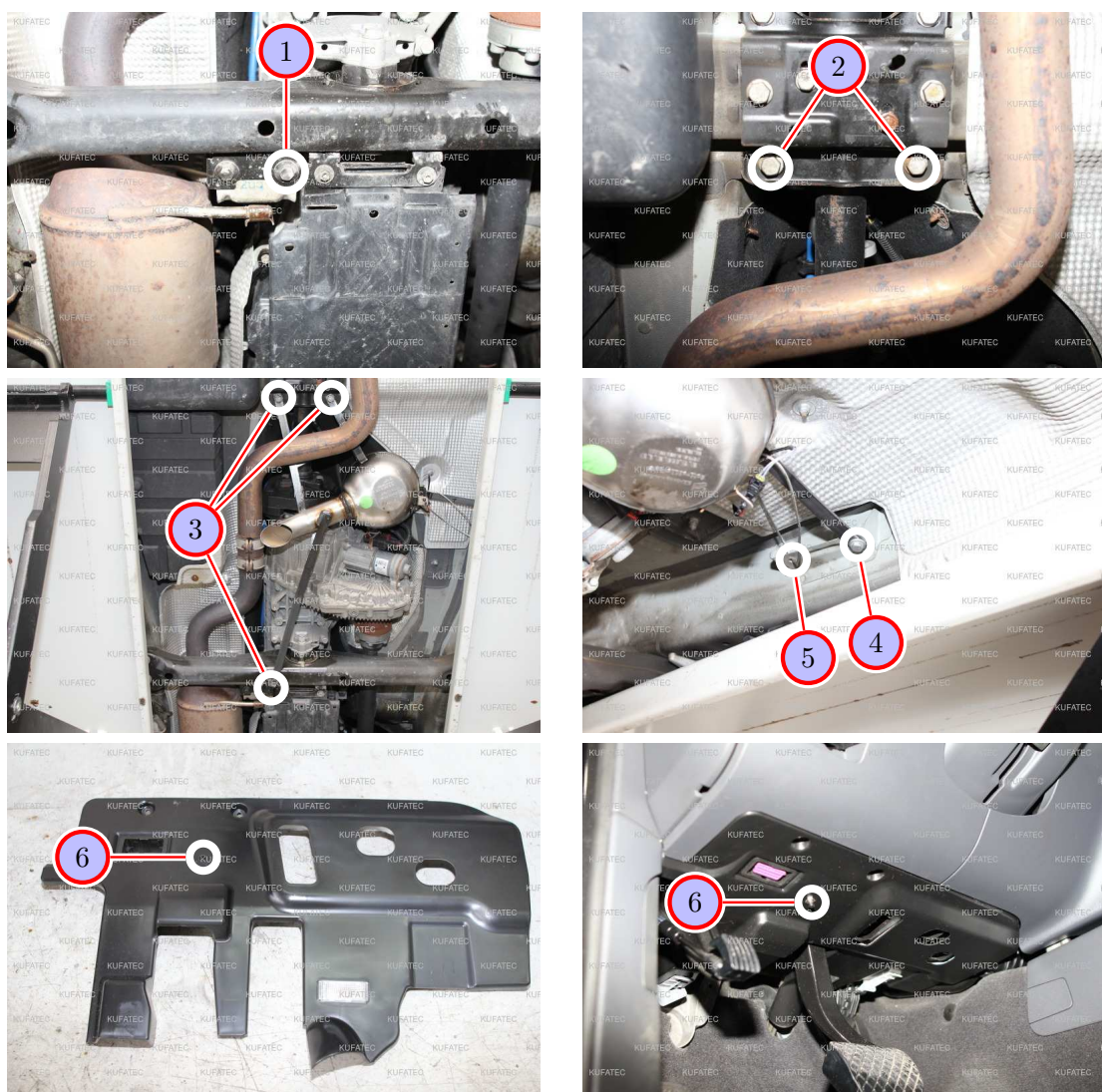


Figure 14: Installation sound generator / pushbutton

Table 12: Installation sound generator / pushbutton - instructions

Nr.	Work step	Note
1	Loosen the marked screw of the gearbox mounting.	13er socket
2	Afterwards loosen the two marked screws.	13er socket
3	Now install the sound generator with the just loosened screws.	13er socket
4	Attach the sound generator on the right side with a additional screw (not included in delivery) at the marked bracket.	
5	Mount now the delivered safety rope at the sound generator as well as at a suitable place at the vehicle.	
6	Drill a hole for the pushbutton at the marked position of the lower trim panel of the dashboard and install the pushbutton at this position.	7mm

21 Software

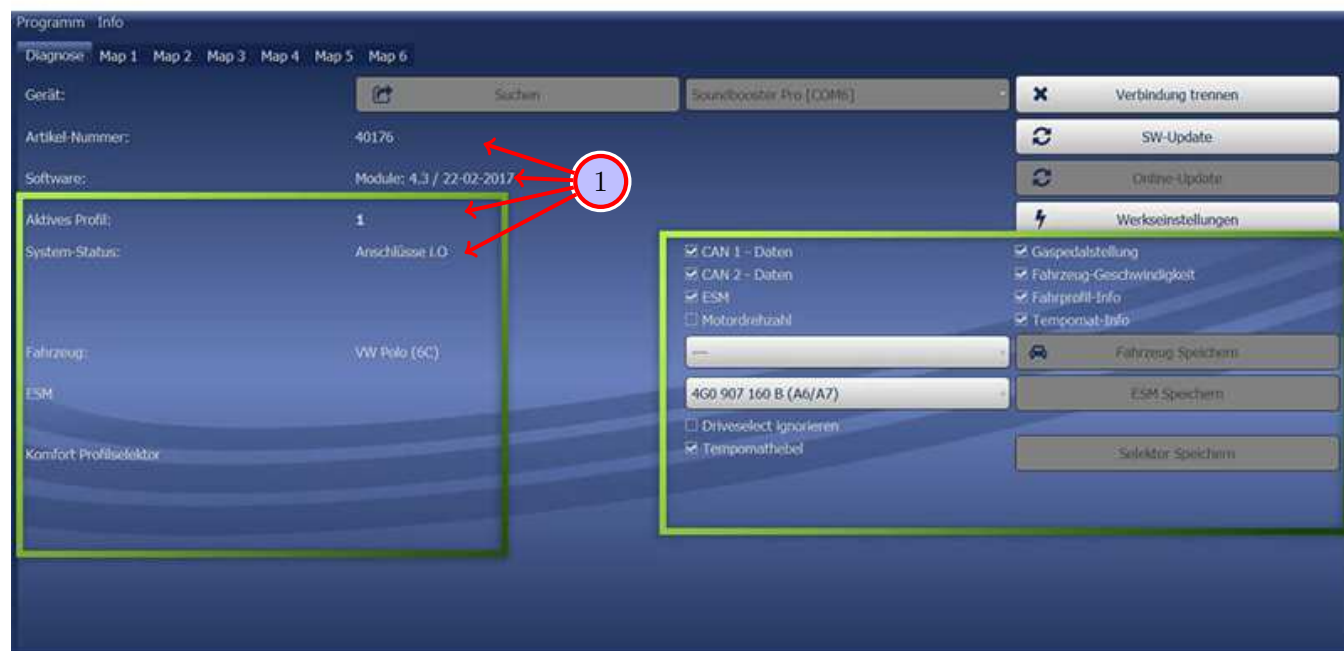


Figure 15: Software

Table 13: Notes for the software

Nr.	Work step	Note
1	If the system does not work after you have installed everything, please check by having a look on to the following Link: https://www.sound-booster.com/en/debugging.html if everything is correct as described. For the further commissioning or debugging, our Sound Booster Software for PC / Mac should be used:	
	Step 1: Download the appropriate software via the following link: https://www.sound-booster.com .	
	Step 2: Turn the ignition of the vehicle on and only then connect the PC / Mac with a USB-cable with our module. It is important here to make sure previously that plus and minus are connected correctly. If this is not the case, a damage at the computer or at the control unit can result.	
	Step 3: Start the downloaded software and first click on search and afterwards on connect.	
	You will be forwarded automatically to the diagnosis side, on which you can see the following things at a glance:	
	Software: Software version / creation date	
	Active profile: The actually activated profile is indicated here.	
	Vehicle: The automatically identified vehicle is indicated here.	
	System Status: You can see here, if the connections are correct.	

22 Software

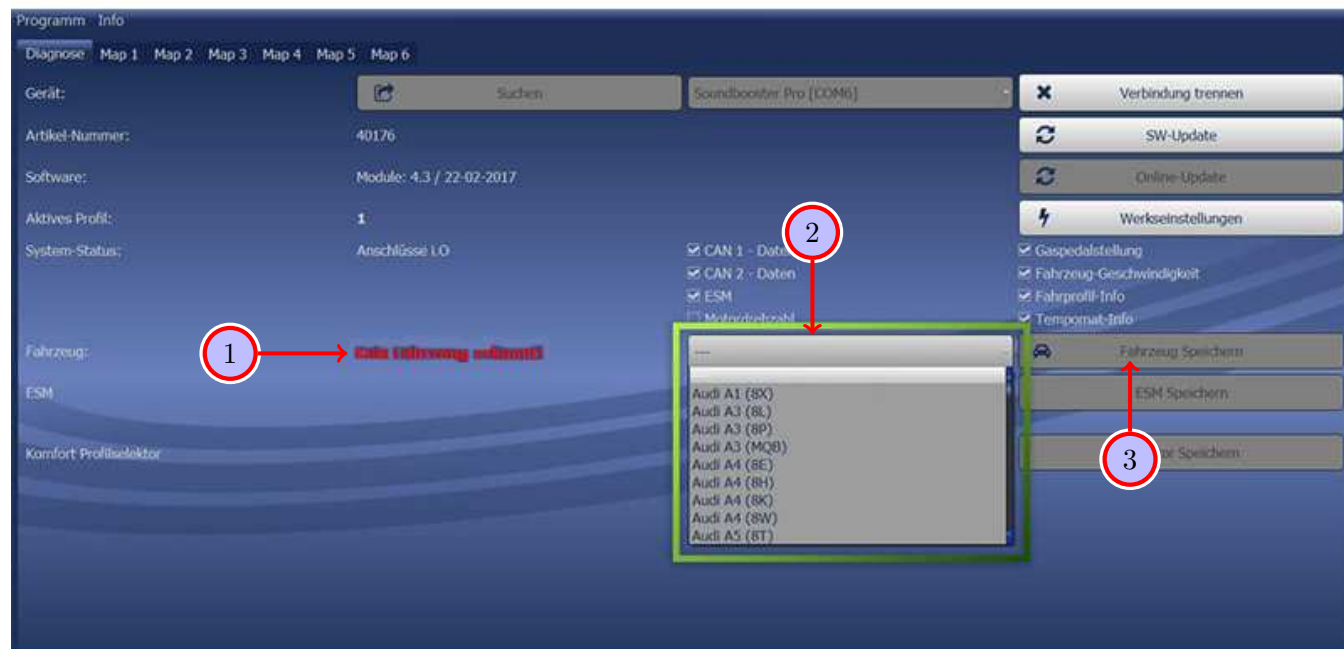


Figure 16: Software

Table 14: Notes for the software

Nr.	Work step	Note
1	If no current vehicle is identified, you have to select the vehicle via the Manual Selection as follows:	
2	Open the dropdown-menu, search for your vehicle and select it.	
3	Click on Save Car to save the vehicle on the module permanently.	
	If you don't find your vehicle in this list, it is possibly necessary that the software has to be adapted to your vehicle. For this, please contact us via e-mail: info@kufatec.de or by phone: +49 (0) 4551 / 80 810 888. We will make an appointment with you, at which we will adapt the software to your vehicle per Team Viewer (telemaintenance).	

23 Software

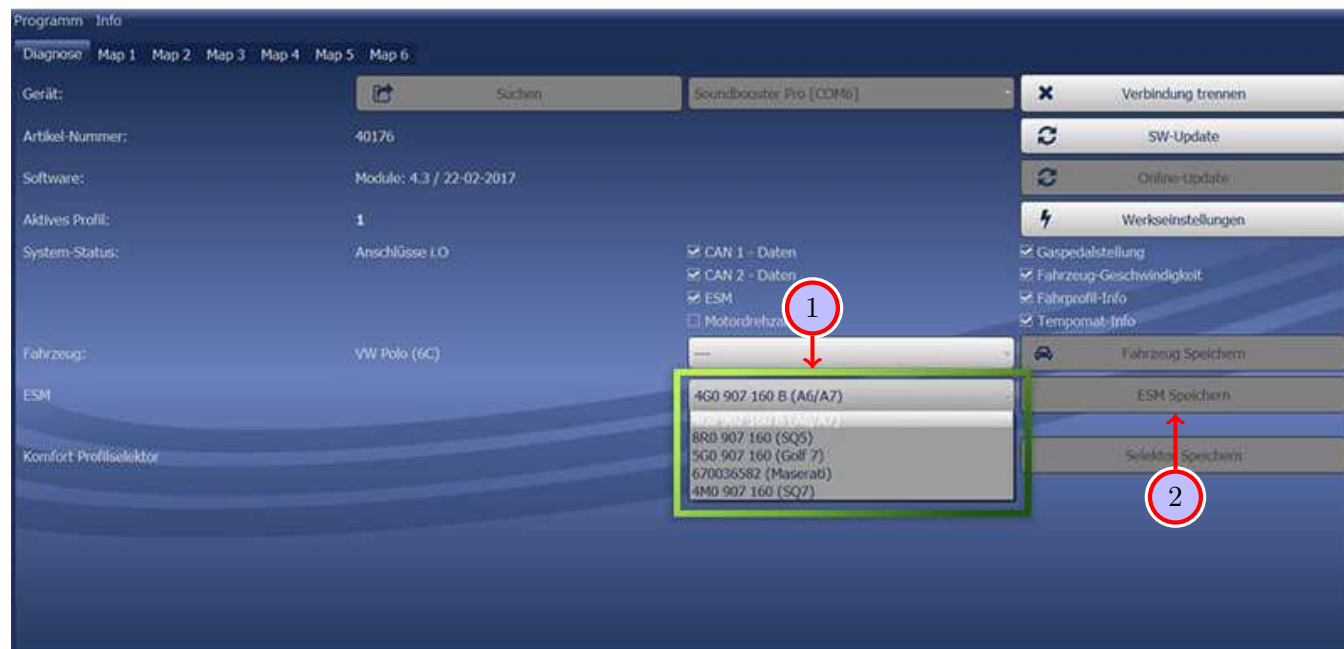


Figure 17: Software

Table 15: Notes for the software

Nr.	Work step	Note
1	You also need to check if the right ESM is selected in our software: Open the dropdown-menu, search for the correct ESM and select it.	
2	Click on Save ESM to save the ESM on the module permanently.	
3	If you, for example, has ordered a complete set with Audi control unit you need to choose as ESM 4G0 907 160 B (A6/A7) . If you install the Maserati Control unit you need to choose the ESM 670036582 (Maserati) If the system does not work after all please get in contact with us via e-mail: info@kufatec.de or by phone: +49 (0) 4551 / 80 810 888. We will check the issue as soon as possible.	

24 Important Information Sound Booster

Please use for the fixation of the Sound Booster suitable high tensile screws. In order to avoid loosening of the screws by vibration please make the screws safe with appropriate factory material e.g. Threadlock. Please additionally check the stability of the Sound Booster regularly and if necessary retighten the screws. In case of no consideration we do not assume liability for possible damages. After successful installation we recommend to cover the sound generator with a zinc spray. Make sure that you cover the opening of the sound generator so that no zinc spray can't get inside the sound generator.

As additional safety the delivered steel cable and the retaining clips have to be tightened on the Sound Booster as well as at a suitable position in the car. This safety cable is an additional security should the tightening screws should be released by vibration.

List of Figures

1	How to connect a cable to another	6
2	Cable Inscription	7
3	Vehicle overview	8
4	Removing trim panel dashboard	9
5	Removing sill trim and light switch	10
6	Removing lower trim of the instrument panel	11
7	Removal tachometer	12
8	Connection CAN-Bus and ignition lead	13
9	Connection ground and removing trim panels passenger's side	14
10	Removal cover parts passenger's side	15
11	Removal passenger's seat	16
12	Removal seat console passenger's side	17
13	Routing connecting cable sound generator	18
14	Installation sound generator / pushbutton	19
15	Software	20
16	Software	21
17	Software	22

List of Tables

1	How to connect a cable to another	6
2	Removing trim panel dashboard - instructions	9
3	Removing sill trim and light switch - instructions	10
4	Removing lower trim of the instrument panel - instructions	11
5	Removal tachometer - instructions	12
6	Connection CAN-Bus and ignition lead - instructions	13
7	Connection ground and removing trim panels passenger's side - instructions	14
8	Removal cover parts passenger's side - instructions	15
9	Removal passenger's seat - instructions	16
10	Removal seat console passenger's side - instructions	17
11	Routing connecting cable sound generator - instructions	18
12	Installation sound generator / pushbutton - instructions	19
13	Notes for the software	20
14	Notes for the software	21
15	Notes for the software	22